



MAPLEISLAND MEDICAL®

# HDPTFE-MEM®



Edition 2025

# HDPTFE-MEM<sup>®</sup>



## 产品展示 product presentation

钛增强微孔高致密聚四氟乙烯膜  
TITANIUM REINFORCED MICRO PORE HD-PTFE MEMBRANE

## HDPM



**HDPM1224A**  
12mm x 24mm



**HDPM1318A**  
13mm x 18mm



**HDPM1319A**  
13mm x 19mm



**HDPM1424A**  
14mm x 24mm



**HDPM1520A**  
15mm x 20mm



**HDPM1725A**  
17mm x 25mm



**HDPM2025A**  
20mm x 25mm



**HDPM2030A**  
20mm x 30mm



**HDPM2530A**  
25mm x 30mm



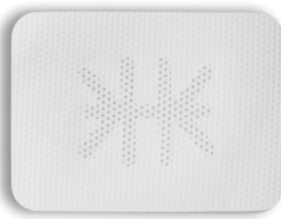
**HDPM2536A**  
25mm x 36mm



**HDPM3041A**  
30mm x 41mm



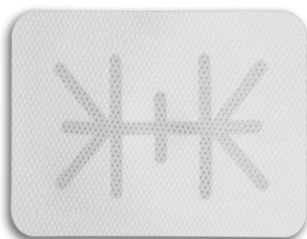
**HDPM3040A**  
30mm x 40mm



**HDPM3040SA**  
30mm x 40mm



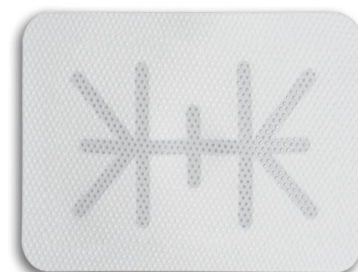
**HDPM4040SA**  
40mm x 40mm



**HDPM4050SA**  
40mm x 50mm



**HDPM4060SA**  
40mm x 60mm



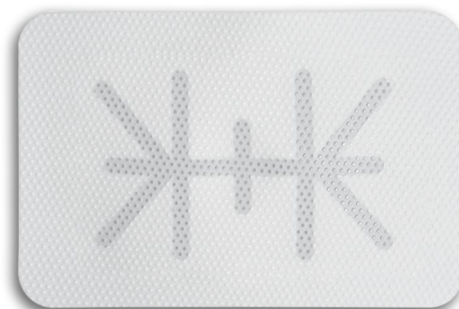
**HDPM5060SA**  
50mm x 60mm



**HDPM5070SA**  
50mm x 70mm



**HDPM6070SA**  
60mm x 70mm



**HDPM6080SA**  
60mm x 80mm

# HDPMB



**HDPMB2021**  
20mm x 21mm



**HDPMB2025**  
20mm x 25mm



**HDPMB2028**  
20mm x 28mm



**HDPMB2029**  
20mm x 29mm



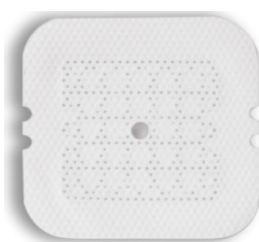
**HDPMB2127**  
21mm x 27mm



**HDPMB2325**  
23mm x 25mm



**HDPMB2530**  
25mm x 30mm

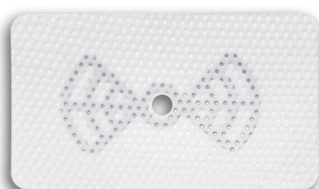


**HDPMB2830**  
28mm x 30mm

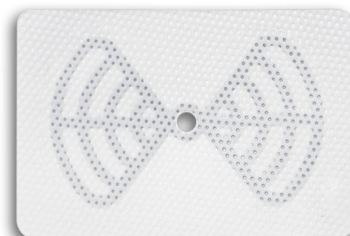
# HDPA



**HDPA1525**  
15mm x 25mm



**HDPA2035**  
20mm x 35mm



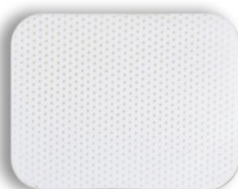
**HDPA3045**  
30mm x 45mm

不可吸收微孔高致密聚四氟乙烯膜  
NON-RESORBABLE MICRO PORE HD-PTFE MEMBRANE

# HDPN



**HDPN1520(No Core)**  
15mm x 20mm



**HDPN2025(No Core)**  
20mm x 25mm



**HDPN2029(No Core)**  
20mm x 29mm



**HDPN2530(No Core)**  
25mm x 30mm



**HDPN3040(No Core)**  
30mm x 40mm

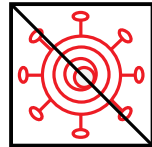


# HDPTFE-MEM<sup>®</sup>

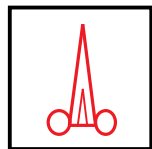


## 产品特性与优势

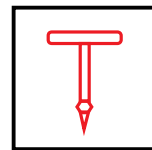
### Product Features & Advantages



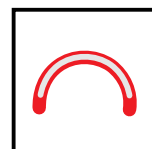
高致密的聚四氟乙烯膜，  
高密度的孔径防止细菌渗透  
Highly dense PTFE membrane with high-density  
pores to prevent bacterial penetration.



本产品可以修剪，根据所需修剪形状，  
但尽量不要修剪到钛支架  
The membrane can be trimmed as your requirement,  
but try not to trim to titanium bracket.



本产品可配合钛钉、膜钉使用固定，HDP A、  
HDP MB型号可配合基台螺丝使用，适配度高  
The membrane can be fixed with screw or tack.  
The HDP A and HDP MB models can be used with abutment screws  
with high compatibility.



内含钛支架可塑性强、支撑力强，可根据所需  
支撑贴合  
The built-in titanium scaffold has strong plasticity and strong supporting force,  
and can be supported and fitted according to the required.

## 产品注意事项

### Product cautions

- 1、本产品是高致密的HDPTFE-MEM<sup>®</sup>
- 2、为了促进牙龈快速愈合可以在HDPTFE-MEM<sup>®</sup>上覆盖可吸收生物膜，但不是必选项，需结合临床自行选择
- 3、本产品分正、反面，有纹路的一面朝向软组织、光滑面朝向术区，产品可以用手预弯，与术区贴合

1. This is highly dense HDPTFE-MEM<sup>®</sup>.
2. An absorbable biomembrane can be covered on the HDPTFE-MEM<sup>®</sup> to promote rapidly healing of gums, but it is not a must. It can be selected according to clinical situation.
3. The product has a front and a reverse side. The textured side should face soft tissue, and the smooth side face surgical site. It can be pre-bent by hand to conform to the surgical site.

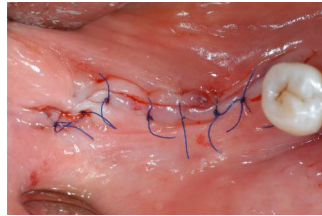
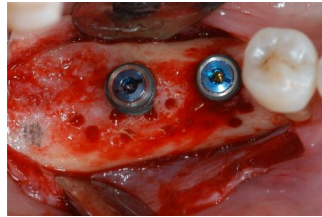


# HDPTFE-MEM<sup>®</sup>

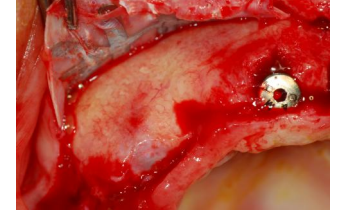
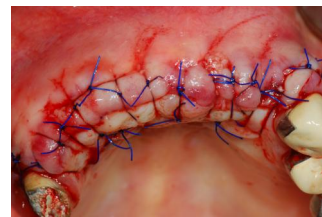
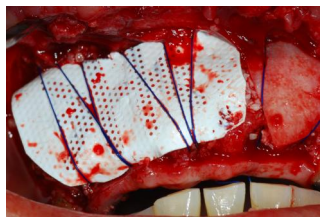
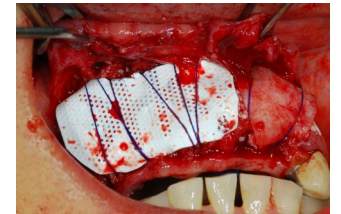
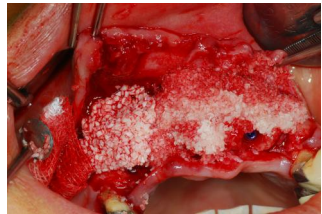
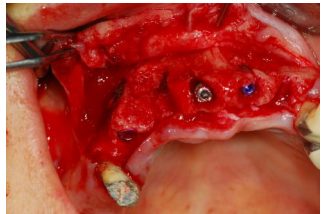


## 产品临床案例 Product clinical cases

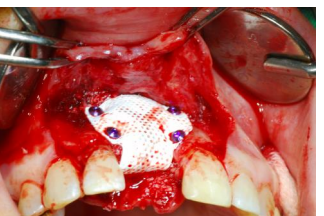
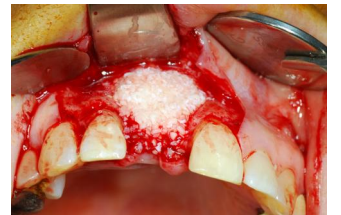
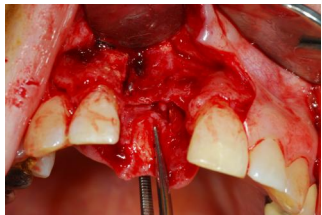
### CASE1



### CASE2



### CASE3





**MAPLEISLAND MEDICAL®**

Company Name: Maple Island Medical Technology (Qingdao) Co., Ltd.  
Address: 77 Keyun Rd, Hi-tech Zone, Qingdao City, Shandong Prov., China  
Postal Code: 266114  
Mobile: +86-15308385888  
Office Tel: +86-532-80963040  
Email: mapleisland2024@163.com  
WS: www.mnmina.com



Made in China